

## Bijlage 13 NFLS

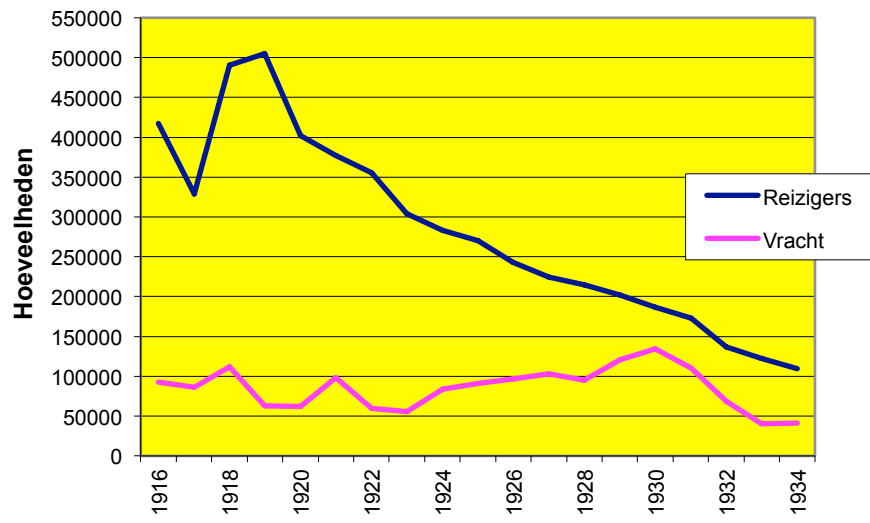
### Overzicht vervoer op NFLS-lijnen 1916-1934 (reizigers en vracht)

Samenstelling:

Dick H. Huis, registeraccountant

Jaar	Aantallen (vracht in tonnen)				Opbrengst in NFLS		Per eenheid in <i>f</i>	
	Reizigers	Vracht	Wagens	Los vee	Reizigers	Vracht	Reizigers	Vracht
1916	417.009	92.400	177	5.197	206.808	88.374	2,016	1,046
1917	328.496	86.482	216	6.244	227.985	88.516	1,441	0,977
1918	490.245	111.785	84	2.810	265.621	71.882	1,846	1,555
1919	505.108	63.120	146	3.246	314.157	93.761	1,608	0,673
1920	401.701	62.399	151	3.726	269.904	112.322	1,488	0,556
1921	376.917	98.509	99	3.458	320.705	191.288	1,175	0,515
1922	355.375	59.655	157	3.526	298.273	120.458	1,191	0,495
1923	303.584	55.493	97	3.372	245.430	88.859	1,237	0,625
1924	283.228	83.929	91	2.944	223.812	122.043	1,265	0,688
1925	270.318	91.191	76	2.115	219.716	118.090	1,230	0,772
1926	242.695	96.337	44	2.488	203.023	120.074	1,195	0,802
1927	224.710	103.114	50	3.018	190.901	124.161	1,177	0,830
1928	214.546	94.778	32	3.510	180.059	107.963	1,192	0,878
1929	202.105	120.733	57	3.508	169.668	124.899	1,191	0,967
1930	186.442	134.762	33	2.305	161.169	133.104	1,157	1,012
1931	172.599	110.324	28	1.330	150.642	109.680	1,146	1,006
1932	136.739	68.630	9	628	118.345	67.972	1,155	1,010
1933	122.607	40.247	18	232	99.198	49.612	1,236	0,811
1934	109.387	41.206	8	63	86.059	44.335	1,271	0,929

### Vertrekkende reizigers/vracht in tonnen



### Opbrengst per reiziger/vracht per ton

